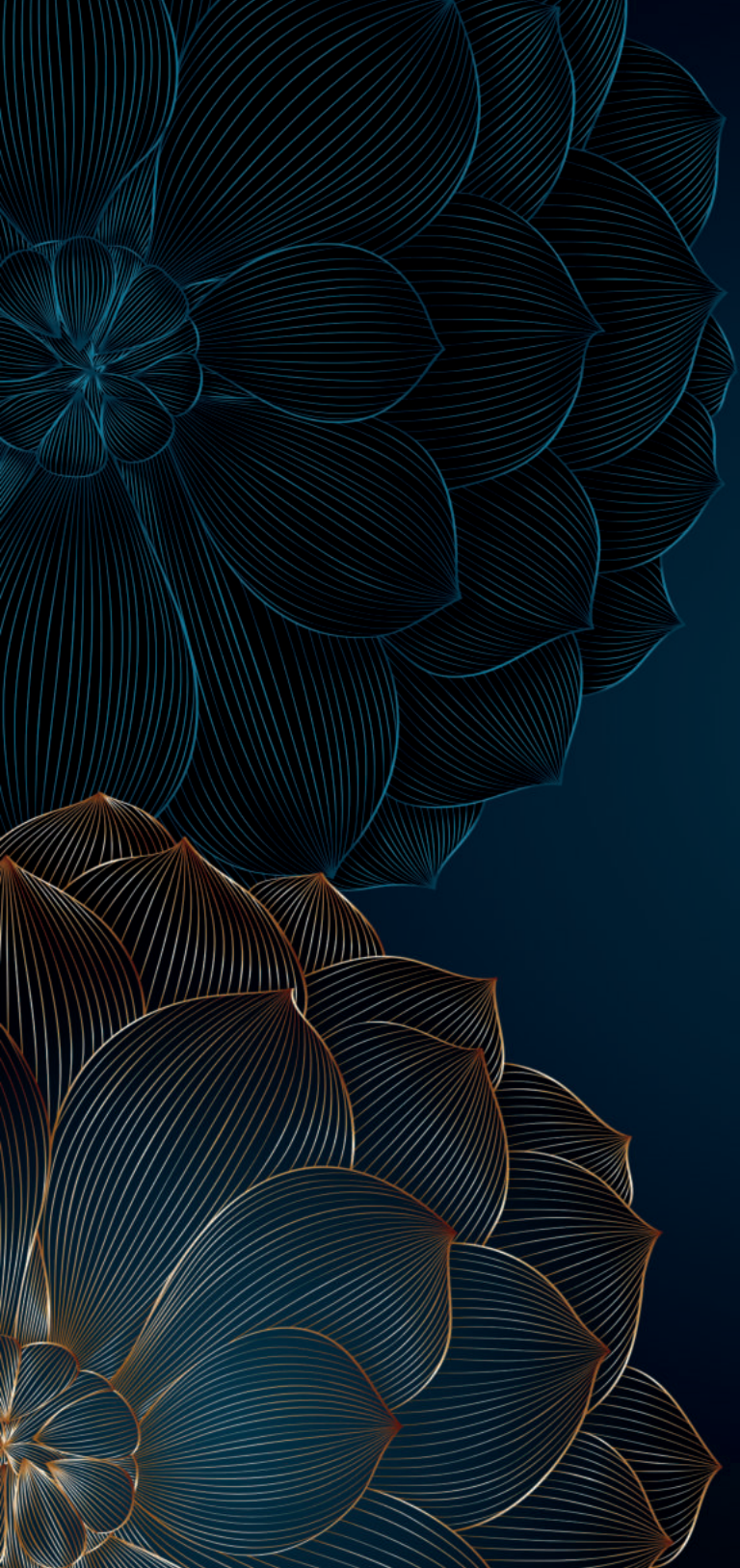


EVERY SQUARE FOOT  
SPELLS LUXURY







### **Tamil Nadu's Leading Real Estate Developer**

We are Casagrand Builder Private Limited, an ISO certified real estate enterprise committed to building aspirations and delivering value. Established in 2004, we have developed over 30 million square feet of prime residential real estate across Chennai, Bengaluru and Coimbatore. Over 22,000 happy families across 125+ landmark properties stand testimony to our commitment, which is in line with our philosophy of creating superior living spaces that reflect our belief.

In the 17th year of our journey, we are all set to progress further with projects worth over ₹8,000 crores in the pipeline with lasting value, integrity and quality.





## AN ULTIMATE BENCHMARK OF LUXURY

Welcome to the splendid life! Sprawling over 6.29 acres in Navalur is Casagrand Divinity, a luxurious living destination like no other! Each home is designed to delight and promise nothing less than an extraordinary lifestyle. Equipped with every imaginable contemporary comfort and convenience, these homes redefine luxury living.

**Experience luxury, superiority and an extraordinary lifestyle at Casagrand Divinity!**

## SALIENT FEATURES

- Elegantly crafted 97 modern villas on a sprawling 6.29 acres in Navalur
- Villa structure consists of ground floor + 2 floors
- Meticulously designed independent 4 BHK villas with no common wall sharing
- Safe & secure community with the best of architecture & finesse
- All villas have an aesthetically planned private landscaped garden & two car parks
- Community offers 50+ world-class amenities & features that include a grand clubhouse, rooftop swimming pool, amphitheatre, toy car track, Wi-Fi zone, kid's library & more
- 65% open space for maximized ventilation & lush greenery
- 100% Vaastu compliant homes with zero wastage of space
- Surrounded by prominent IT/ITES companies, schools, colleges and hospitals



Aerial View







Rooftop Swimming Pool



# AMENITIES

## ENTERTAINMENT & FEATURES



### ENTERTAINMENT

1. Amphitheatre
2. Gallery seating
3. Senior citizen seating
4. Leisure lawn
5. Chit chat corner
6. Reading corner

### FEATURES

7. Entrance plaza with seating
8. Tropical boulevard
9. Tree plaza with seating
10. Wifi zone
11. Hammocks
12. Aroma garden

13. Herbal garden
14. Palm tree court

## OUTDOOR AMENITIES



### SPORTS

15. Multipurpose court
16. Outdoor gym
17. Yoga deck
18. Loop walking track
19. Jogging track

### KIDS

20. Tot-lot
21. Board game plaza
22. Sand play pit
23. Nanny's corner
24. Kid's play area

25. Bermed play lawns
26. Tree house
27. Toy car track
28. Swing court
29. Bounce ball court
30. Kid's play lawns

## CLUBHOUSE AMENITIES



### INDOOR

31. Gym
32. Interactive gym
33. Mini theatre
34. Indoor kid's play area
35. Kid's ball pit
36. Lego play area
37. Kid's library
38. Rock climbing wall

39. Pin screen interactive wall
40. Indoor games room
41. Pool table
42. Foosball
43. VR gaming
44. Kid's sensory floor games
45. Board games zone
46. Multipurpose hall

### TERRACE

47. Rooftop swimming pool
48. Kid's pool
49. Jacuzzi
50. Interactive water jets
51. Deck with lounge seaters
52. Water cascade

Gym



Multipurpose Hall



Indoor Games Room



Kid's Play Area







## CASAGRAND'S BEST IN PRODUCT SUPERIORITY



- A community with the best of architecture & finesse
- Signature 4 BHK villas with superior specifications to upgrade your lifestyle
- 50+ amenities & features
- 97 independent villas spread across 6.29 acres
- 100 % Vaastu compliant homes
- A safe & secure community with multi-tier security system
- Efficiency in space planning

## LUXURY VILLAS TO UPGRADE YOUR LIFESTYLE



- Secured visitor access control, association management through MyGate app
- Monitor your visitors by a video door phone through 7 inch LED screen from your villa
- Digital door lock system with five independent unlocking features such as fingerprint, PIN Code, RF card, mechanical key & bluetooth, remote control (optional) and it comes with strong security features

## EFFICIENCY IN MASTER PLAN AND HOUSING THE BEST PRODUCT FEATURES



- A Grand and inviting entry into the community - entrance archway with landscape elements
- The gated community boasts of an efficient building footprint where 65% of land area is open space
- Casagrand Divinity offers the best of master plan and is designed prioritizing light, ventilation, privacy and Vaastu
- 7500 sft of best in class clubhouse is designed within the community providing ample indoor amenities for the residents
- The project features an amphitheatre with outdoor screening facility for the residents to enjoy their evening with communal activities
- The community is designed with 7m (23 ft), 6m (20 ft) wide driveways across the site for comfortable two-way vehicular movement
- Orientation of the villas ensures maximum wind-flow and minimum heat-gain

## OFFERING YOU 50+ AMENITIES AND FEATURES! THE BEST IN MARKET!



- Host yourself and your guests in our grand clubhouse with facilities like multipurpose party hall, indoor games room, kid's play area & mini theatre
- A grand double height club entry lobby with a lounging facility
- Club terrace facilitated with amenities like rooftop jacuzzi pool, kid's pool with lounge seaters and water feature jets
- Indulge in fitness within the community:
  - Indoor gymnasium
  - Outdoor gym & yoga midst the landscaped outdoor spaces
  - Jogging & loop walking track provided in the community
- The project features leisure lawns, senior citizen seating, palm tree court with hammocks for the residents to enjoy their evening with communal activities
- Outdoor amenities for children like kid's play area, tot lot, sand play pit, cognitive play area, bermed play lawns, etc., that provides an active environment

## KNOW WHY OUR VILLAS ARE SUPERIOR



- Wide designer main door with architrave - a space to personalize your entrance
- Designer villa number signage
- Wireless mobile charging pod in the living and master bedroom for hassle free charging experience
- Bluetooth speaker facility in the kitchen
- Pullout drying string for hassle free drying in kitchen
- Single bowl matte stainless steel sink with drain board and pull out faucet in the kitchen
- 600 x 1200 mm vitrified flooring tiles in living, lounge, dining, kitchen & bedrooms
- 600 x 600 mm anti-skid vitrified flooring tiles in combination with pressed tiles provided in the open terrace, for hosting parties
- Weather proof charging points provided in the extended outdoor deck, balcony and terrace for evening parties & your functional convenience
- Luxurious master bathroom with rain shower, glass shower partition and a luxurious granite counter with counter-top washbasin
- Premium range American standard / Kohler / equivalent fittings and waterproof doors in all bathrooms
- 2' long trench and SS designer gratings are provided in the master toilet, other toilets and kitchen, respectively

## CONSIDERING VASTU? WE GOT THAT SORTED TOO



- All villas have East and North facing main entrance door
- All villas have SW bedroom
- All villas have the kitchen in SE or NW
- All villas have East / North facing kitchen hobs
- No bedrooms have headboard in the North
- No SW entrance

## EFFICIENCY IN SPACE PLANNING



- Dedicated car parks, 1 open and 1 covered along with landscape, are designed for all villas
- All villas are planned with separate living and dining avoiding crossover
- Well planned spacious kitchens, with a minimum size of 10'x11'
- Exclusively planned family lounge in the first floor
- All villas planned with a minimum of 10' wide landscape backyard space
- All villas designed with an extended landscape deck and hardscape features that open out from the dining, connecting with nature
- Spacious bedrooms with walk-in wardrobes of a minimum size, 7'x11'
- All villas are planned with a dedicated store room
- Well concealed and camouflaged electrical, plumbing and centralized sewage treatment plant in site



Entrance View



Street View







# SITE PLAN



# LEGENDS

## Entertainment & Features

1. Amphitheatre
2. Gallery seating
3. Senior citizen seating
4. Leisure lawn
5. Chit chat corner
6. Reading corner
7. Entrance plaza with seating
8. Tropical boulevard
9. Tree plaza with seating
10. Wifi zone
11. Hammocks
12. Aroma garden
13. Herbal garden
14. Palm tree court

## Clubhouse Amenities

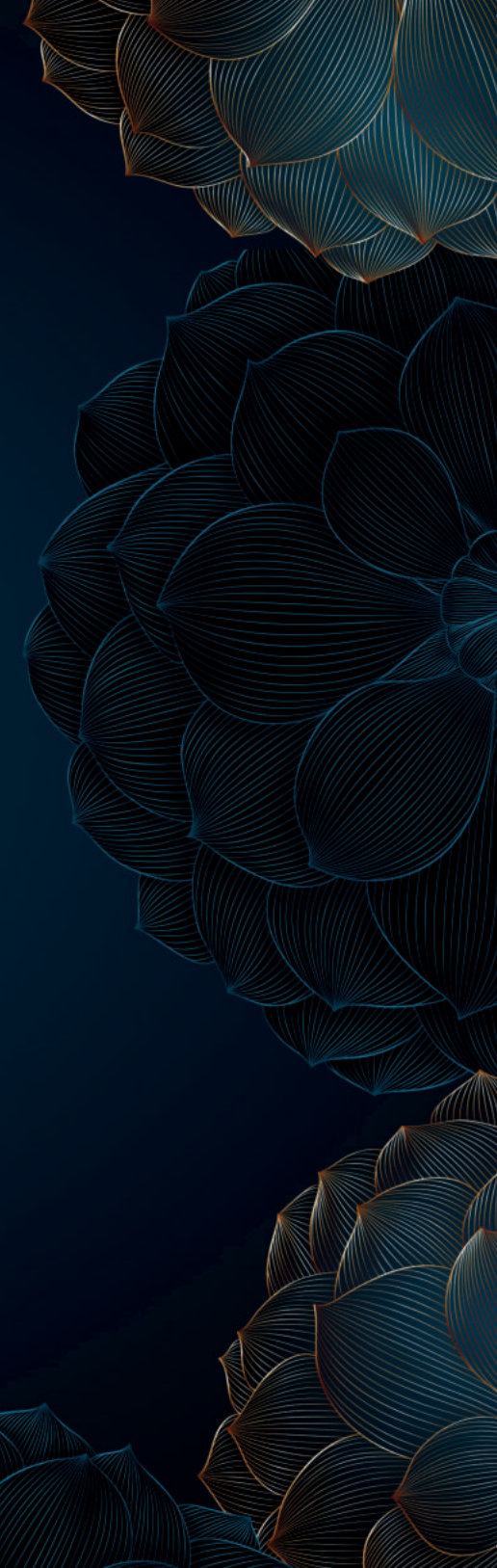
31. Gym
32. Interactive gym
33. Mini theatre
34. Indoor kid's play area
35. Kid's ball pit
36. Lego play area
37. Kid's library
38. Rock climbing wall
39. Pin screen interactive wall
40. Indoor games room
41. Pool table
42. Foosball
43. VR gaming
44. Kid's sensory floor games
45. Board games zone
46. Multipurpose hall

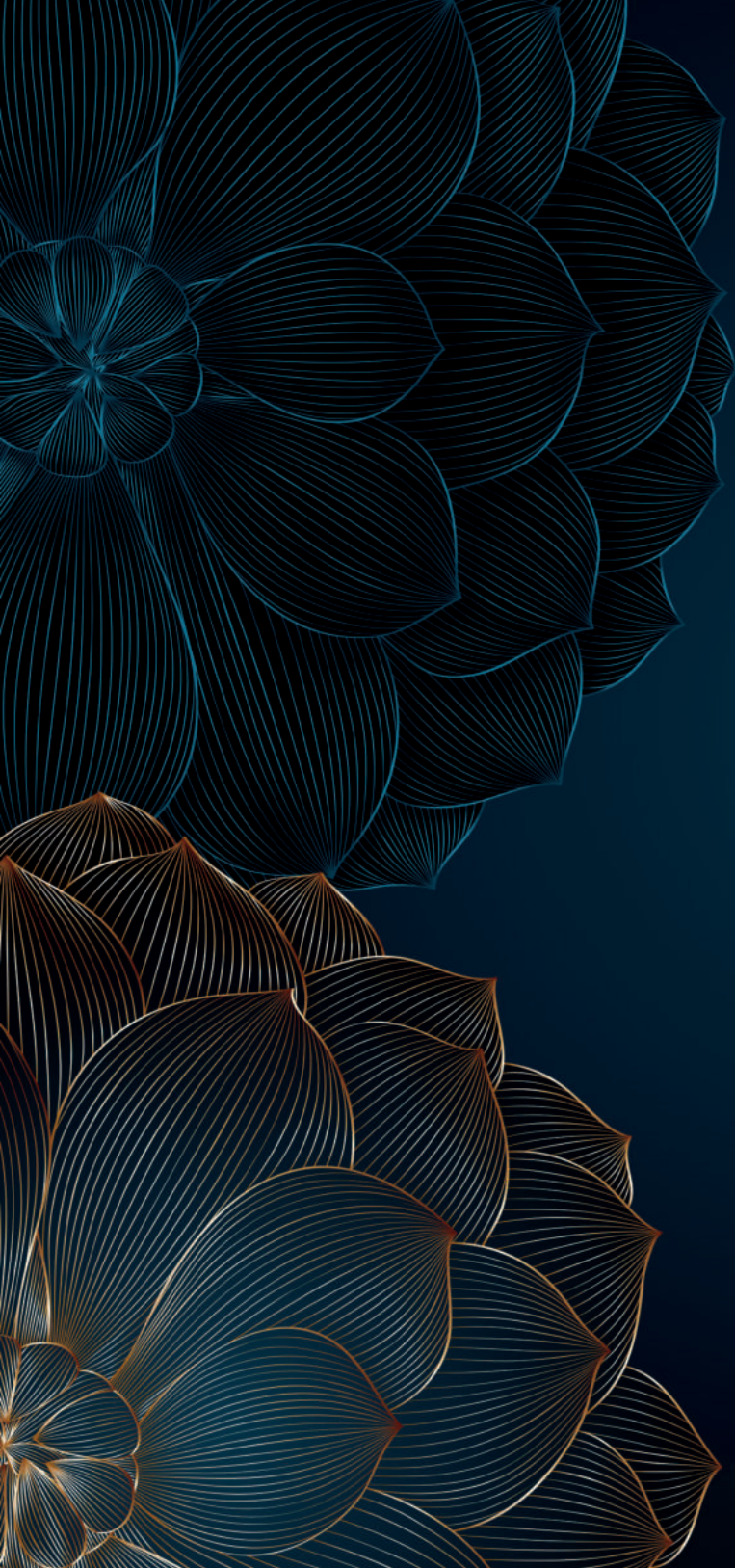
## Outdoor Amenities

15. Multipurpose court
16. Outdoor gym
17. Yoga deck
18. Loop walking track
19. Jogging track
20. Tot-lot
21. Board game plaza
22. Sand play pit
23. Nanny's corner
24. Kid's play area
25. Bermed play lawns
26. Tree house
27. Toy car track
28. Swing court
29. Bounce ball court
30. Kid's play lawns

## Clubhouse Amenities (Terrace)

47. Rooftop swimming pool
48. Kid's pool
49. Jacuzzi
50. Interactive water jets
51. Deck with lounge seaters
52. Water cascade





## 4 BHK VILLA PLANS

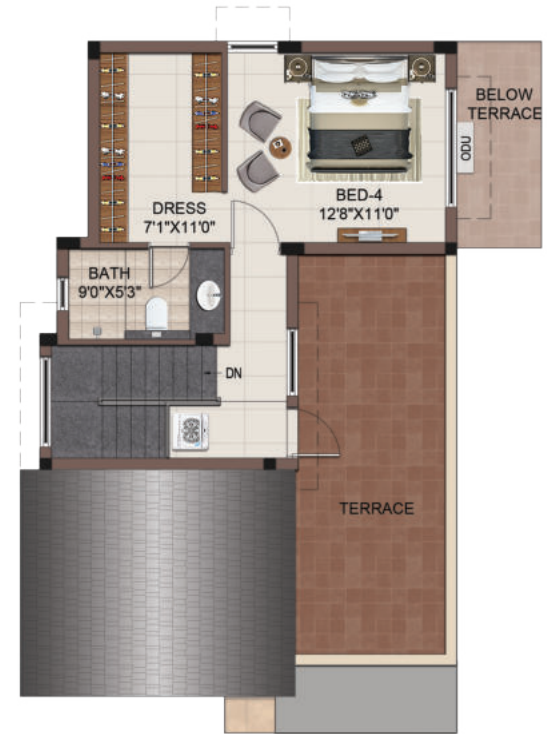
**TYPE-B5 | 4 BHK-4T-NORTH FACING VILLA**



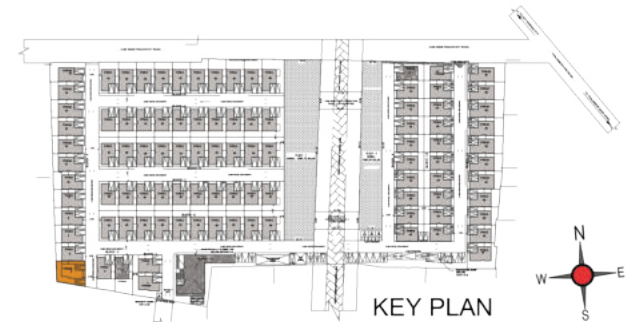
GROUND FLOOR PLAN



FIRST FLOOR PLAN



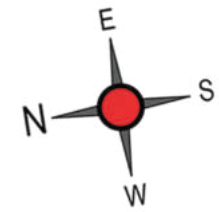
SECOND FLOOR PLAN



KEY PLAN

VILLA NO.	CARPET AREA (SQFT)	SALEABLE AREA (SQFT)	VILLA LAND AREA (SQFT)
05	1781	2422	2721

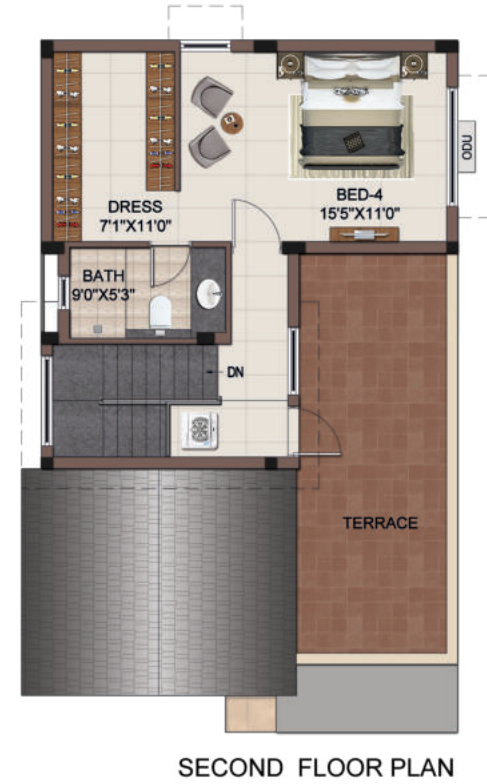
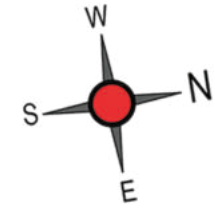
TYPE-D3 | 4 BHK-4T-NORTH FACING VILLA



VILLA NO.	CARPET AREA (SQFT)	SALEABLE AREA (SQFT)	VILLA LAND AREA (SQFT)
76	1875	2463	2424



**TYPE-B3 | 4 BHK-4T-NORTH FACING VILLA**



VILLA NO.	CARPET AREA (SQFT)	SALEABLE AREA (SQFT)	VILLA LAND AREA (SQFT)
77	1875	2463	2353



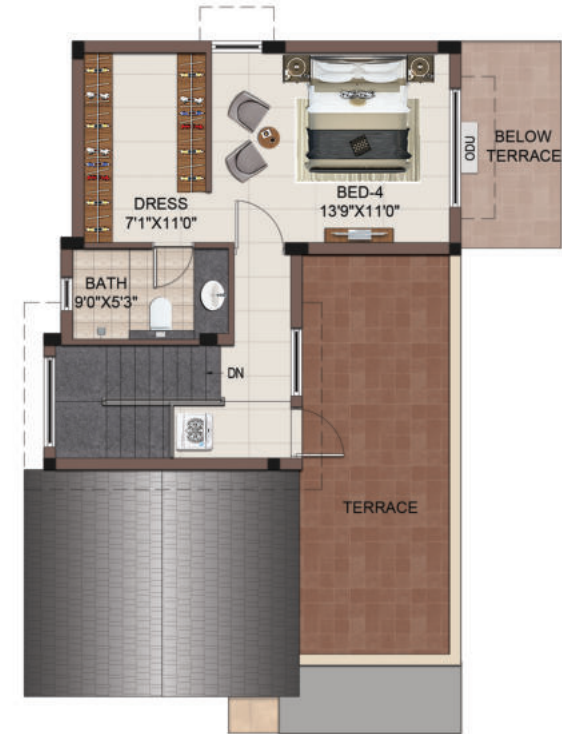
TYPE-B4 | 4 BHK-4T-NORTH FACING VILLA



GROUND FLOOR PLAN

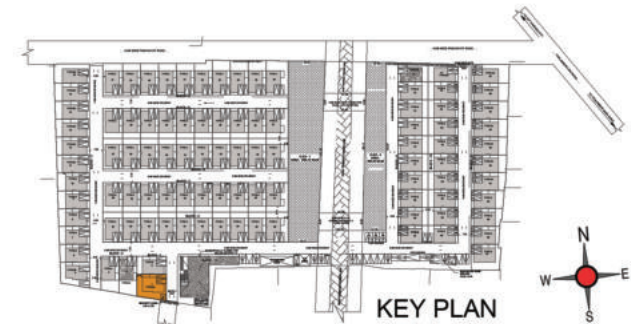


FIRST FLOOR PLAN

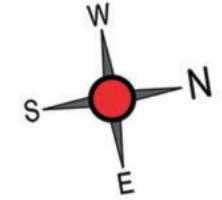


SECOND FLOOR PLAN

VILLA NO.	CARPET AREA (SQFT)	SALEABLE AREA (SQFT)	VILLA LAND AREA (SQFT)
01	1821	2476	2710



KEY PLAN





TYPE-A1 | 4 BHK-4T-EAST FACING VILLA



GROUND FLOOR PLAN

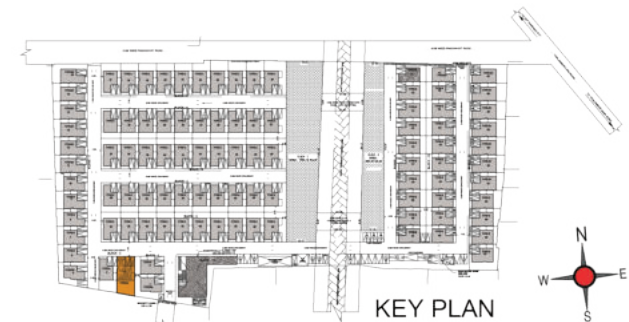


FIRST FLOOR PLAN

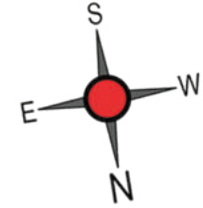


SECOND FLOOR PLAN

VILLA NO.	CARPET AREA (SQFT)	SALEABLE AREA (SQFT)	VILLA LAND AREA (SQFT)
03	1875	2530	2808



KEY PLAN



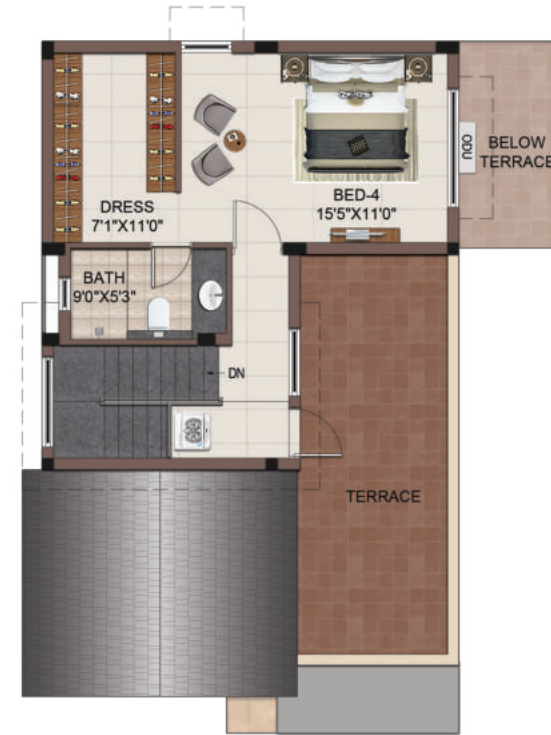
**TYPE-B | 4 BHK-4T-NORTH FACING VILLA**



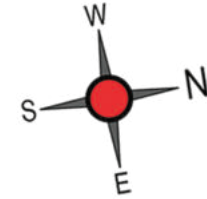
**GROUND FLOOR PLAN**



**FIRST FLOOR PLAN**



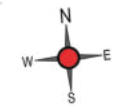
**SECOND FLOOR PLAN**



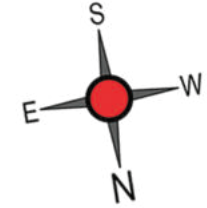
VILLA NO.	CARPET AREA (SQFT)	SALEABLE AREA (SQFT)	VILLA LAND AREA (SQFT)	VILLA NO.	CARPET AREA (SQFT)	SALEABLE AREA (SQFT)	VILLA LAND AREA (SQFT)
02	1875	2538	2363	79A	1875	2538	2384
06	1875	2538	2365	81	1875	2538	2384
07	1875	2538	2396	82	1875	2538	2384
7A	1875	2538	2428	83	1875	2538	2384
09	1875	2538	2457	84	1875	2538	2384
10	1875	2538	2485	85	1875	2538	2384
78	1875	2538	2384	86	1875	2538	2384
79	1875	2538	2384				



**KEY PLAN**



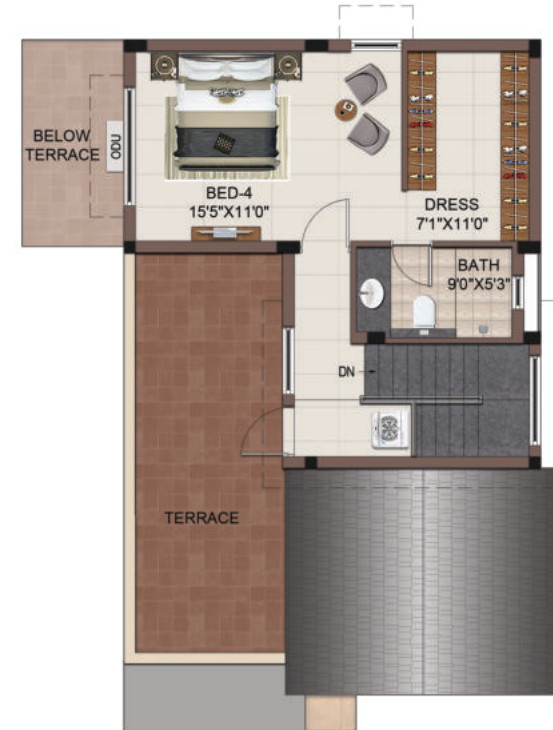
**TYPE-A | 4 BHK-4T-EAST FACING VILLA**



**GROUND FLOOR PLAN**

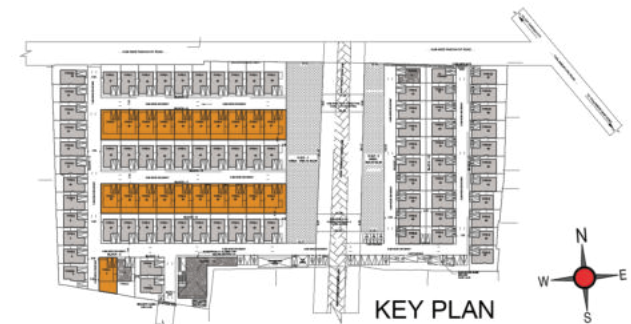


**FIRST FLOOR PLAN**



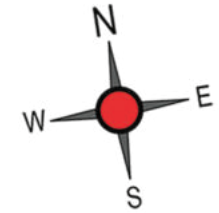
**SECOND FLOOR PLAN**

VILLA NO.	CARPET AREA (SQFT)	SALEABLE AREA (SQFT)	VILLA LAND AREA (SQFT)
04	1875	2538	2653
27	1875	2538	2745
28 TO 34 A	1875	2538	2384
36	1875	2538	2548
47	1875	2538	2745
48 TO 55	1875	2538	2384
56	1875	2538	2548



**KEY PLAN**

TYPE-C | 4 BHK-4T-EAST FACING VILLA



GROUND FLOOR PLAN



FIRST FLOOR PLAN



SECOND FLOOR PLAN

VILLA NO.	CARPET AREA (SQFT)	SALEABLE AREA (SQFT)	VILLA LAND AREA (SQFT)	VILLA NO.	CARPET AREA (SQFT)	SALEABLE AREA (SQFT)	VILLA LAND AREA (SQFT)
16A	1875	2538	2615	24	1875	2538	2586
18	1875	2538	2450	25	1875	2538	2581
19	1875	2538	2449	25A	1875	2538	2986
20	1875	2538	2448	37,57	1875	2538	2548
21	1875	2538	2447	38 TO 45	1875	2538	2384
22	1875	2538	2509	58 TO 65	1875	2538	2384
23	1875	2538	2598	46,66	1875	2538	2745



KEY PLAN

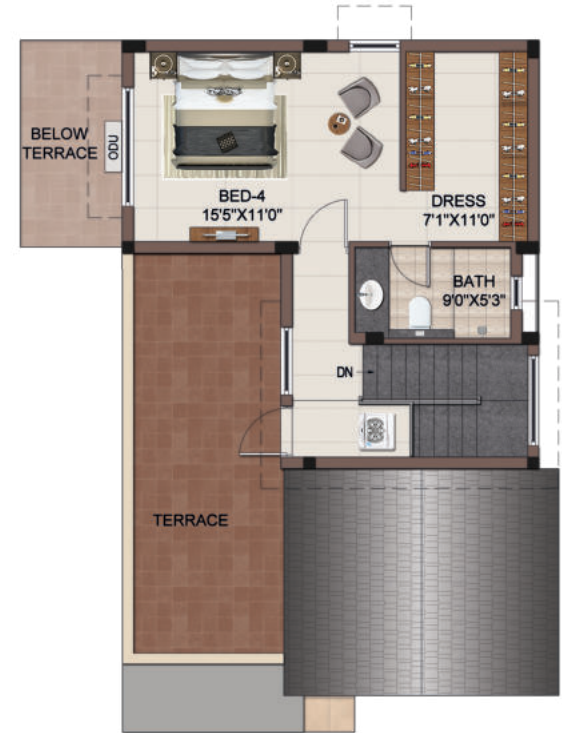
TYPE-D | 4 BHK-4T-NORTH FACING VILLA



GROUND FLOOR PLAN

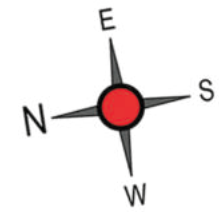
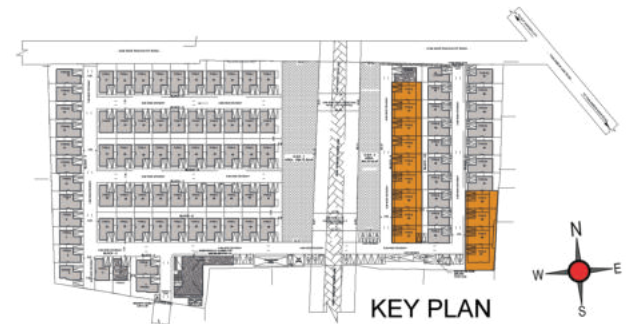


FIRST FLOOR PLAN

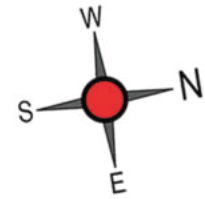
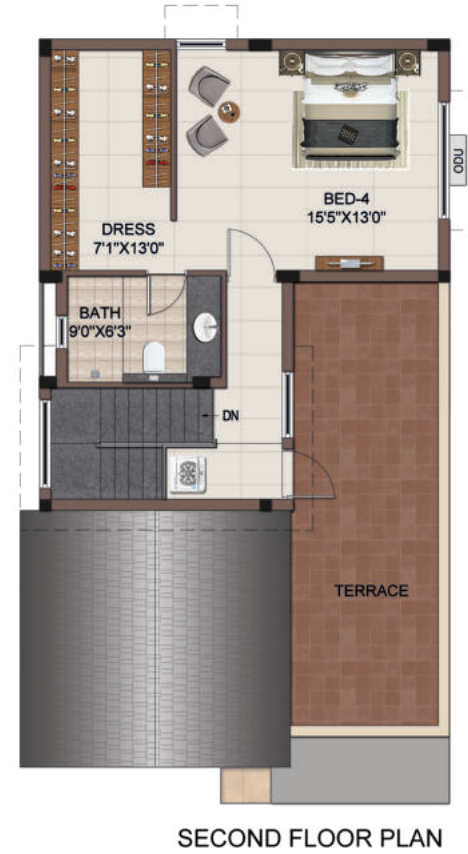


SECOND FLOOR PLAN

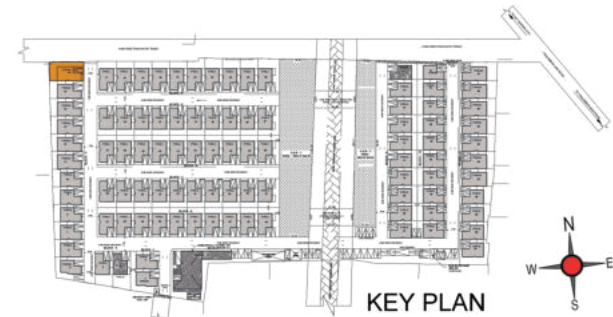
VILLA NO.	CARPET AREA (SQFT)	SALEABLE AREA (SQFT)	VILLA LAND AREA (SQFT)	VILLA NO.	CARPET AREA (SQFT)	SALEABLE AREA (SQFT)	VILLA LAND AREA (SQFT)
67	1875	2538	2384	74	1875	2538	2384
68	1875	2538	2384	75	1875	2538	2384
69	1875	2538	2384	87	1875	2538	2961
70	1875	2538	2384	88	1875	2538	2280
70A	1875	2538	2384	89	1875	2538	2394
72	1875	2538	2384	90	1875	2538	2496
73	1875	2538	2384				



**TYPE-B2 | 4 BHK-4T-NORTH FACING VILLA**



VILLA NO.	CARPET AREA (SQFT)	SALEABLE AREA (SQFT)	VILLA LAND AREA (SQFT)
16	2134	2779	2870



**TYPE-D2 | 4 BHK-4T-NORTH FACING VILLA**



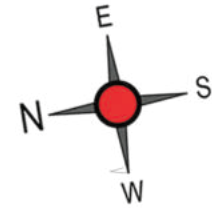
**GROUND FLOOR PLAN**



**FIRST FLOOR PLAN**



**SECOND FLOOR PLAN**



VILLA NO.	CARPET AREA (SQFT)	SALEABLE AREA (SQFT)	VILLA LAND AREA (SQFT)
97	2134	2779	2959



**KEY PLAN**

**TYPE-B1 | 4 BHK-4T-NORTH FACING VILLA**



**GROUND FLOOR PLAN**

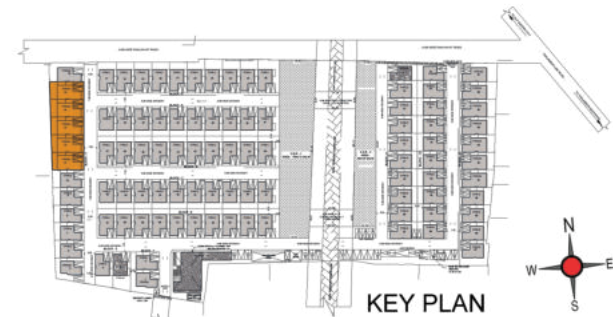


**FIRST FLOOR PLAN**



**SECOND FLOOR PLAN**

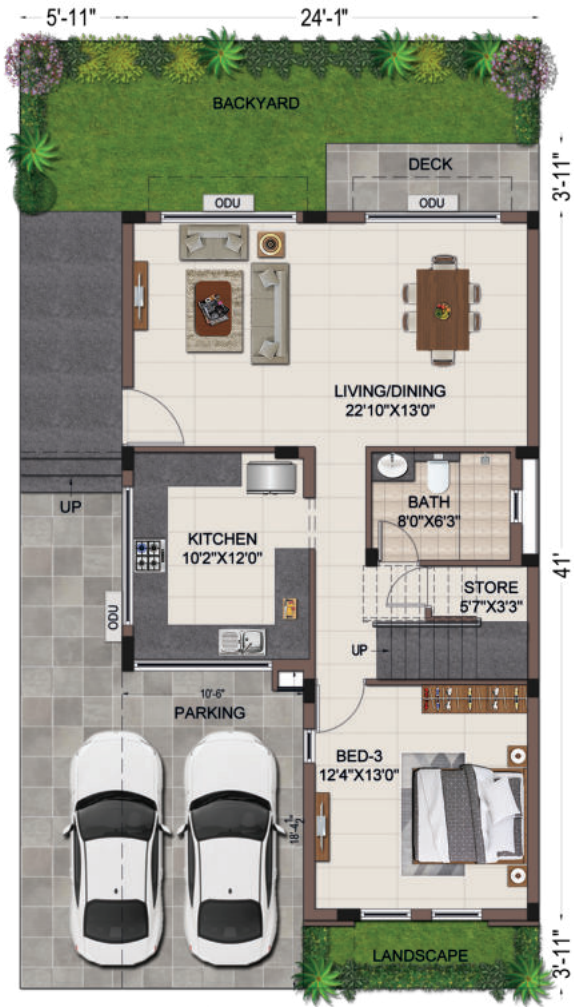
VILLA NO.	CARPET AREA (SQFT)	SALEABLE AREA (SQFT)	VILLA LAND AREA (SQFT)
11	2134	2866	2626
12	2134	2866	2654
12A	2134	2866	2683
14	2134	2866	2712
15	2134	2866	2740



**KEY PLAN**



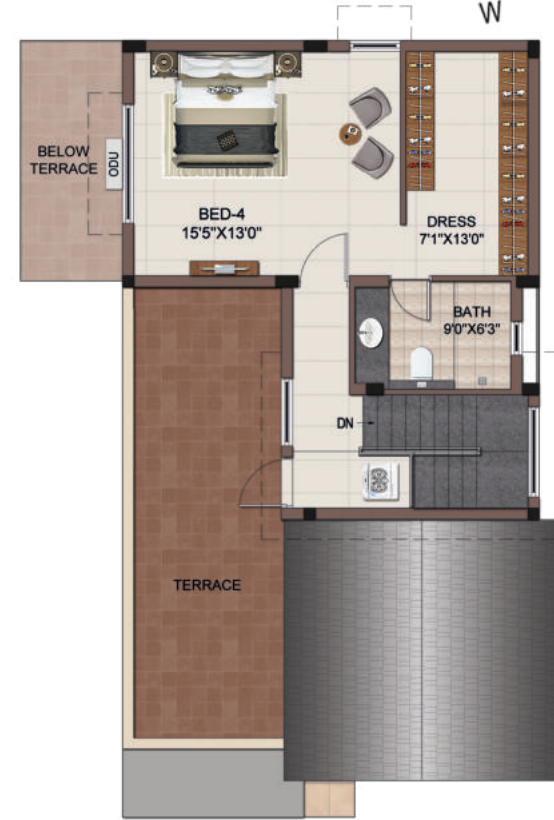
TYPE-D1 | 4 BHK-4T-NORTH FACING VILLA



GROUND FLOOR PLAN

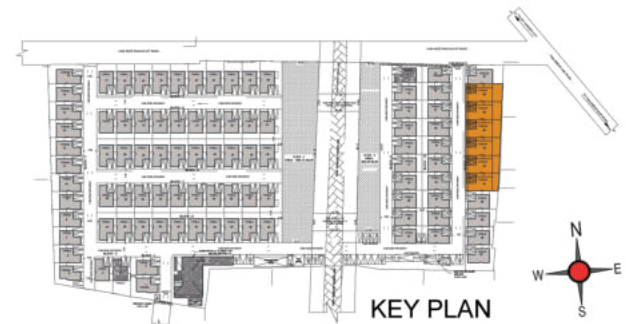


FIRST FLOOR PLAN

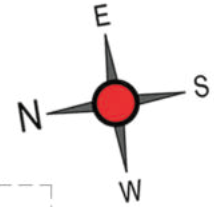


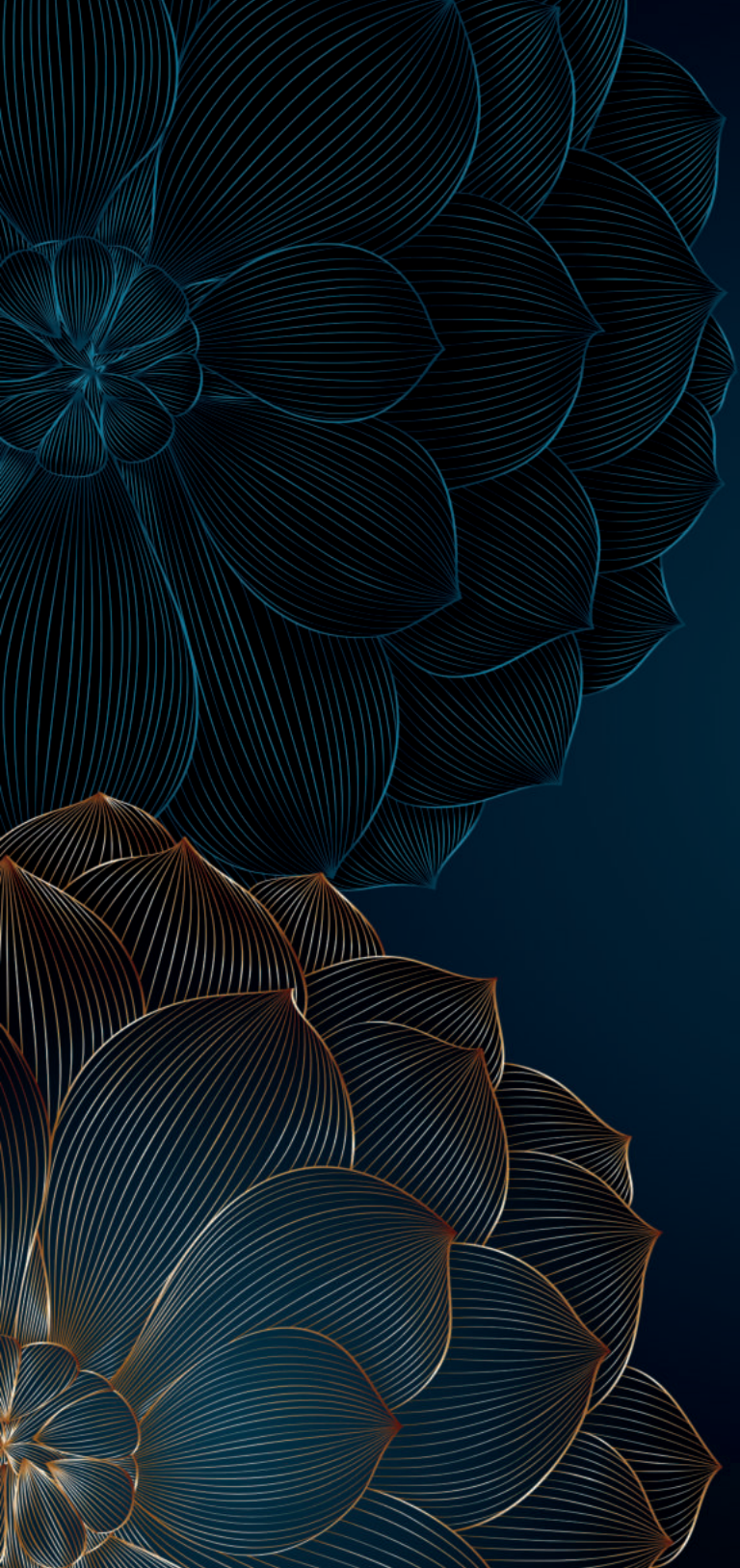
SECOND FLOOR PLAN

VILLA NO.	CARPET AREA (SQFT)	SALEABLE AREA (SQFT)	VILLA LAND AREA (SQFT)
91	2134	2866	2705
92	2134	2866	2759
93	2134	2866	2784
94	2134	2866	2807
95	2134	2866	2835
96	2134	2866	2866



KEY PLAN



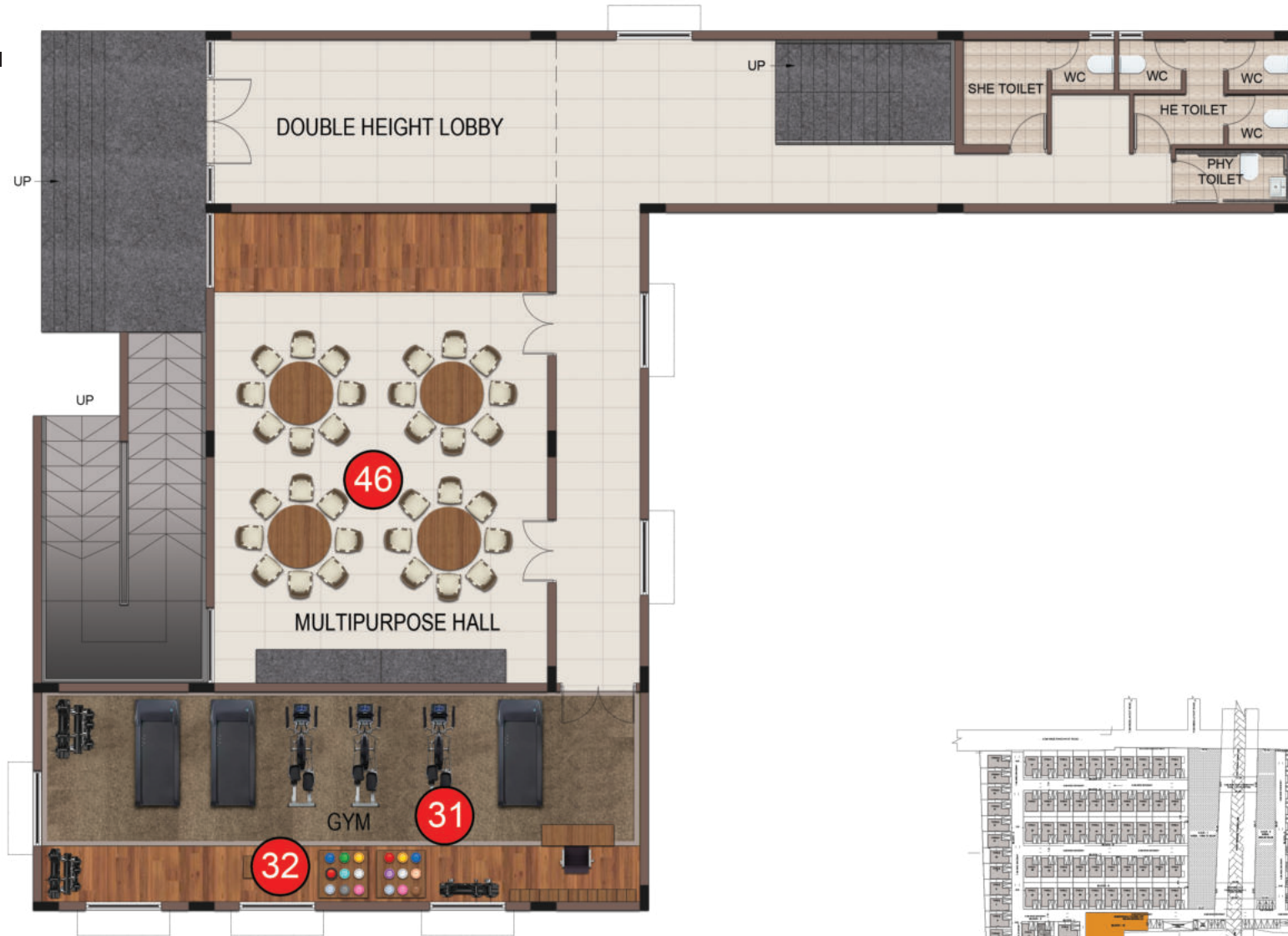
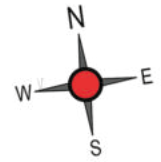


## CLUBHOUSE PLANS

# CLUBHOUSE - GROUND FLOOR

## CLUBHOUSE AMENITIES

- 31. Gym
- 32. Interactive gym
- 46. Multipurpose hall



# CLUBHOUSE - FIRST FLOOR

## CLUBHOUSE AMENITIES

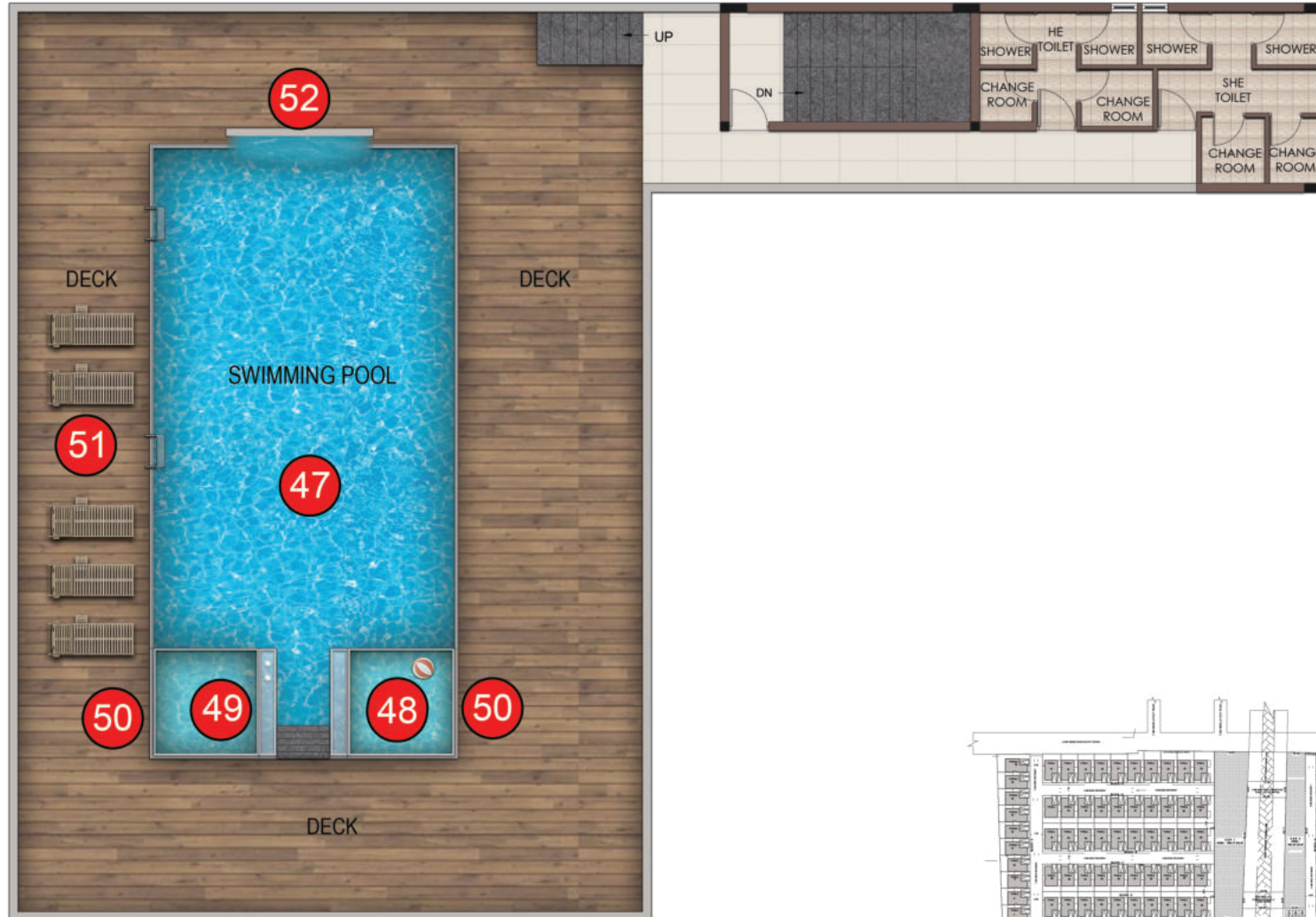
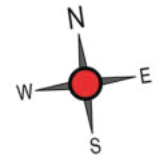
- 33. Mini theatre
- 34. Indoor kid's play area
- 35. Kid's ball pit
- 36. Lego play area
- 37. Kid's library
- 38. Rock climbing wall
- 39. Pin screen interactive wall
- 40. Indoor games room
- 41. Pool table
- 42. Foosball
- 43. VR gaming
- 44. Kid's sensory floor games
- 45. Board games zone



# CLUBHOUSE - SECOND FLOOR

## CLUBHOUSE AMENITIES

- 47. Rooftop swimming pool
- 48. Kid's pool
- 49. Jacuzzi
- 50. Interactive water jets
- 51. Deck with lounge seaters
- 52. Water cascade



Kid's Lobby

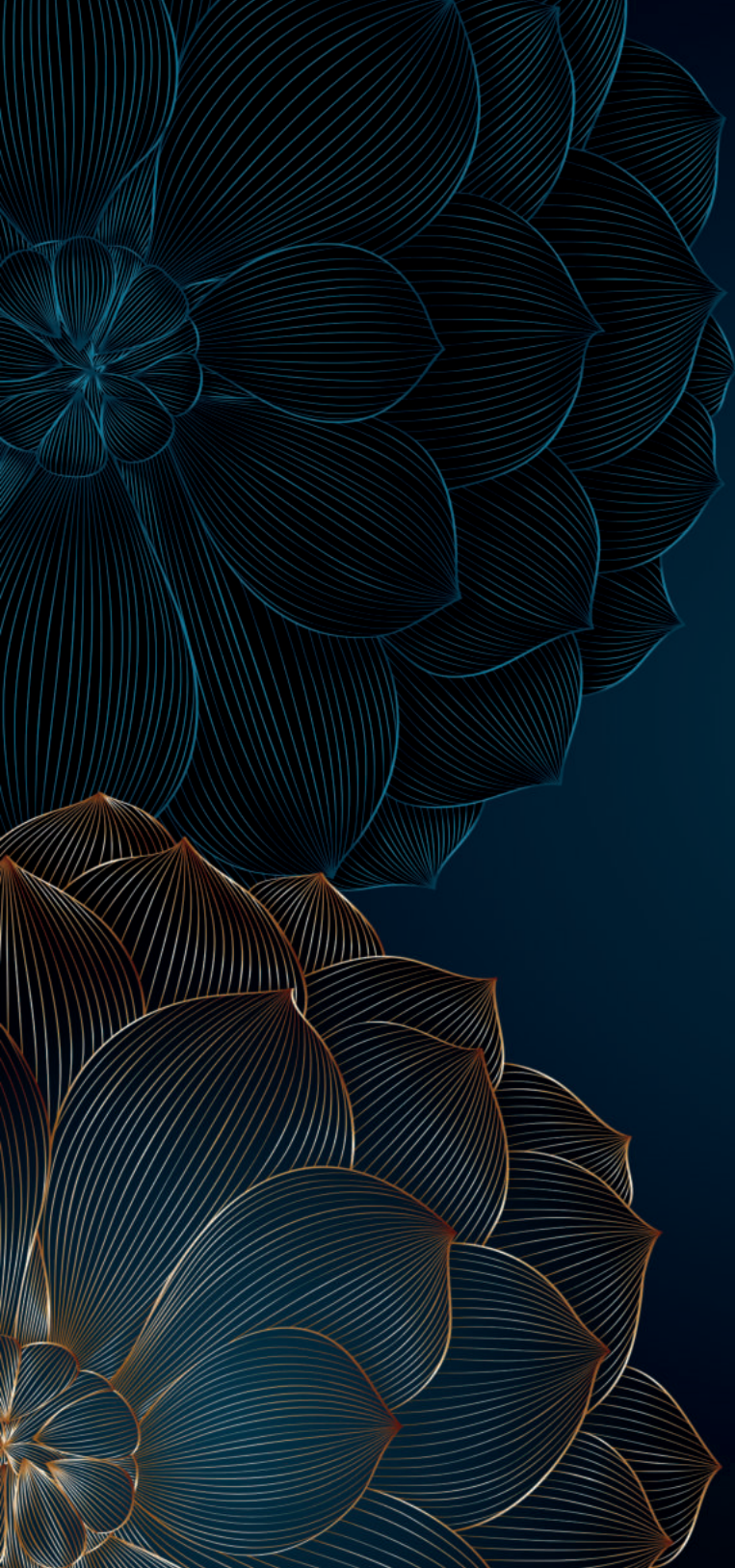


Clubhouse Lobby



Outdoor Seating View





# VILLA SPECIFICATIONS



## STRUCTURE



- Structural system** : RCC framed structure designed for seismic compliant (zone 3)
- Masonry** : 200 mm for external walls & 100 mm for internal walls
- Floor- floor height (incl. slab)** : Will be maintained at 3050 mm
- ATT** : Anti-termite treatment will be done

## WALL FINISH



- Internal walls** : Finished with 2 coats of putty, 1 coat of primer & 2 coats of premium emulsion
- Ceiling** : Finished with 2 coats of putty, 1 coat of primer & 2 coats of tractor emulsion
- Exterior walls** : Exterior faces of the building finished with 1 coat of primer & 2 coats of exterior emulsion paint with color as per architect design
- Bathroom** : Ceramic tile up to 2250 mm height of size 300x600 mm
- Kitchen** : Ceramic wall tile of size 600x600 mm for a height of 600 mm above the counter top finished level

## FLOOR FINISH WITH SKIRTING



- Living, dining, lounge, bedrooms & kitchen** : Vitrified tiles of size 1200x600 mm
- Bathroom** : Anti-skid ceramic tiles of size 300x300 mm
- Staircase** : Granite flooring for staircase will be provided
- Balcony & Open Terrace** : Anti-skid vitrified tiles of size 600x600 mm
- Landscape deck** : Shahabad / Kota stone finish
- Terrace** : Anti-skid vitrified tiles of size 600x600 mm in combination with pressed tiles
- Car parking** : Shahabad / Kota stone finish

## KITCHEN & DINING



- Kitchen** : Platform will be finished with granite slab of 600 mm wide at height of 850 mm from the finished floor level
- Electrical point** : For chimney & water purifier
- CP fitting** : American standard / Kohler / equivalent will be provided
- Sink** : Stainless Steel sink with drain board pull-out sink faucet will be provided

## BALCONY / OPEN TERRACE AND STAIRCASE



- Handrail** : MS handrail as per architect's design with enamel paint finish

## BATHROOMS



- Sanitary fixture** : American standard / Kohler / equivalent
- CP fittings** : American standard / Kohler / equivalent
- Bed 1 bathroom** : Wall mounted WC with cistern, health faucet, rain shower with hand shower, glass partition & counter mount wash basin
- Other bathrooms** : Wall mounted WC with cistern, health faucet, single lever diverter with overhead shower & counter mount wash basin

## JOINERY



### DOORS

- Main door** : Main door of size 1050x2400 mm of engineering wood frame with veneer finish shutter and architrave
- Bedroom doors** : Good quality door frame with double side laminated shutter of size 900x2100 mm will be provided
- Bedroom doors** : Ironmongeries like door lock of Dormakaba / Yale / equivalent, tower bolt & magnetic catcher

- Bathroom doors** : Good quality door frame with double side laminated shutter of size 750x2100 mm will be provided  
: Ironmongeries like door lock of Dormakaba / Yale / equivalent, door bush, tower bolt
- Store room door** : Good quality door frame with skin molded shutters of two panel of size 750x1800 mm will be provided.  
: Ironmongeries like door lock of Dormakaba / Yale / equivalent, door bush, tower bolt
- Terrace** : Good quality door frame with FRP shutter of size 900x2100 mm  
: Ironmongeries like door lock of Dormakaba / Yale/ equivalent, door bush, tower bolt

## WINDOWS

- Windows** : Aluminum powder coated windows with sliding shutter with see through plain glass and MS grill / railing based on architect's design intent
- French doors** : Aluminum powder coated doors with toughened glass
- Ventilators** : Aluminum powder coated fixed frame with pinhead glass

## ELECTRICAL & PLUMBING POINTS



- Power supply** : 3 Phase power supply connection
- Safety device** : MCB & ELCB (Earth leakage circuit breaker)
- Switches & sockets** : Modular box & modular switches & sockets of Schneider / Honeywell / equivalent
- Wires** : Fire Retardant Low Smoke (FRLS) copper wire of IS brand Polycab / equivalent
- TV** : Point in living & bed 1 and provision in other bedrooms & lounge
- Telephone** : Point in living & bed 1
- Data** : Point in living and provision in lounge
- Split- air conditioner** : Point will be provided in living, dining, lounge & all bedrooms
- Exhaust fan** : Point will be given in all bathrooms
- Geyser** : Geyser point will be provided in all bathrooms
- Villa back-up** : Inverter provision for all room fan and light points

- VDP** : Video door phone will be provided in the entrance - main door
- Mobile charging pod** : Mobile charging pod in bed 1 & living area
- Bluetooth speaker** : Bluetooth speaker will be provided in the kitchen
- 5 amp socket (outdoor)** : 5 amp socket will be provided in the ground floor landscape deck, first floor open terrace and in terrace
- HOB point** : Point provided in the kitchen
- Tap** : Point provided in the outdoor deck

## OUTDOOR FEATURES



- Water storage** : Centralized UG sump with WTP (Min. requirement as per water test report)
- Rain water harvesting** : Rain water harvesting site
- STP** : Centralized sewage treatment plant
- Common back-up** : 100% power backup for common amenities such as clubhouse, WTP, STP & selective common area lighting
- Safety** : CCTV surveillance cameras will be provided at pivotal locations
- Security** : Security booth will be provided at the entrance, facilitated with MyGate app
- Compound wall** : Site perimeter fenced by compound wall with entry gates for a height of 1800 mm / as per landscape design intent
- Landscape** : Suitable landscape at appropriate places in the project
- Driveways** : Paved finish roads with convex mirror for safe turning in driveway in / out

”  
**AS WE EVOLVE. OUR HOMES  
 SHOULD TOO**

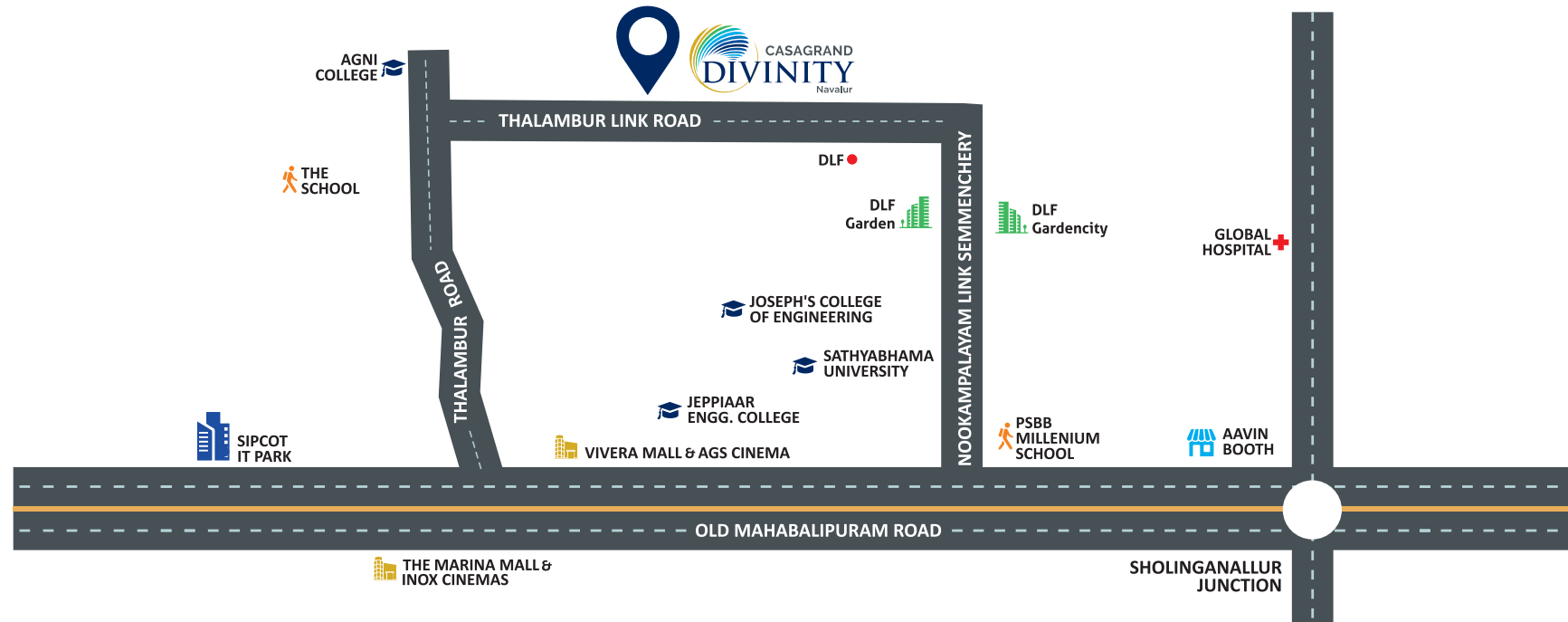
- SUZANNE TUCKER  
 ”





## LOCATION MAP & ADVANTAGES

## LOCATION MAP



## LOCATION ADVANTAGES

### MISCELLANEOUS

Thalambur Bus Terminus	5 mins
Chennai International Airport	20 mins
Tambaram Railway	25 mins
Dinesh Vihar (AWHO)	2 mins
DLF Garden City	8 mins

### CORPORATES

Ozone Techno Park	8 mins
Infosys	10 mins
SIPCOT IT Park	12 mins
TCS	15 mins
Elcot SEZ	18 mins

### SCHOOLS

Athena Global School	2 mins
BVM Global School	3 mins
PSBB Millennium School	3 mins
Amethyst International School	4 mins
The School - KFI	5 mins
HLC International School	7 mins

### HOSPITALS

Sri Venkateswara Dental Hospital	5 mins
Gleneagles Global Health City	12 mins
Swaram Hospital & Specialty Clinic	14 mins
Chettinad Hospital	18 mins

### COLLEGES

Agni College of Technology	5 mins
T S Narayanaswami College of Arts & Science	6 mins
Jeppiar Engg. College	7 mins
Sathyabama University	12 mins
St. Josephs College of Engg.	12 mins
S.R.R Engg College	15 mins

### ENTERTAINMENT

Vivira Mall & AGS Cinemas	8 mins
The Marina Mall & Inox Cinemas	10 mins



## PAYMENT SCHEDULE

10%	Booking advance
40%	Agreement signing
15%	On commencement of foundation
10%	On commencement of ground floor roof
10%	On commencement of 1 <sup>st</sup> floor roof
10%	On commencement of 2 <sup>nd</sup> floor roof
2.5%	Completion of flooring in respective unit
2.5%	Handing over





## AWARDS

- ★ **The Economic Times - 2021 (Brand)**  
Best Brands Award
- ★ **13<sup>th</sup> Estate Awards Franchise India and REMAX India - 2021**  
Casagranda Boulevard  
Best Mid-Segment Project of the Year
- ★ **Realty Conclave Excellence Awards 2021 - South**  
Casagranda Boulevard  
Most Popular Project of the Year
- ★ **Realty Conclave Excellence Awards 2021 - South**  
Casagranda Orlena  
Mid-Segment Project of the Year
- ★ **Construction Week - 2021**  
Casagranda Primera  
Runner up at Residential Project of the Year
- ★ **Times Business Awards 2020 - The Times of India - 2020 (Brand)**  
Best Real Estate Company of Tamil Nadu
- ★ **11<sup>th</sup> Estate Annual Awards, powered by Franchise India - 2019**  
Casagranda Esmeralda  
Luxury Villa Project of the Year
- ★ **ET Now - 2019**  
Casagranda Royale  
Most Admired Upcoming Project of the Year
- ★ **ET Now - 2019**  
Casagranda Eternia II  
Best Project in Non-Metro
- ★ **ET Now - 2019**  
Casagranda Zenith  
Innovative Project of the Year

**Buddy Neighbour Scheme**

**CASAGRANT**  
building aspirations

# Refer & Earn

Refer your family, friends or colleagues to a Casagrand home and get a chance to earn up to ₹ 2,00,000 for your effort.

To refer, call **93840 27974** or write to [referral@casagrand.co.in](mailto:referral@casagrand.co.in)

**GET ASSURED RENT ON YOUR CASAGRANT PROPERTY.**

**CASAGRANT RENT ASSURE**

Call **98841 99957**  
[www.cgrentassure.com](http://www.cgrentassure.com)

**sellassure**  
CASAGRANT  
selling casagrand home made easy

## WE'LL HELP YOU SELL.

Casagrand introduces "SELLASSURE", a hassle-free resale solution for Casagrand Home Buyers. Understanding our customer's needs, we have enabled a one stop solution which creates the right exposure to listed properties, generates refined leads and ensures seamless closures.

Contact us at **99622 09500**  
[www.cgsellassure.com](http://www.cgsellassure.com) | [sellassure@casagrand.co.in](mailto:sellassure@casagrand.co.in)

Rera No: TN/01/Building/0145/2022 | [www.tnrera.gov.in](http://www.tnrera.gov.in)

# CASAGRANT

building aspirations

### CORPORATE OFFICE

NPL Devi, New No. 111, Old No. 59,  
LB Road, Thiruvanmiyur, Chennai - 600 041.  
Ph: +91-44 4411 1111  
Fax: +91-44 4315 0512

### COIMBATORE OFFICE

Sri Dwaraka, No. 1-A,  
B.R. Nagar Main Road,  
Singanallur Post,  
Coimbatore - 641 005.  
Ph: +91 72993 70001

### BENGALURU OFFICE:

Salma Bizhouse, 34/1, 4<sup>th</sup> Floor,  
Meanee Avenue Road,  
Opp. Lakeside Hospital,  
Ulsoor Lake, Bengaluru - 560 042.  
Ph: +91-80 4666 8666

### DUBAI OFFICE:

4th Floor, Block-B,  
Business Village, Dubai,  
United Arab Emirates,  
PO Box. 183125.  
Ph: +971 565302759

[www.casagrand.co.in](http://www.casagrand.co.in)

All the images are rendered and the proportions are subject to change. The units are subject to availability.

Disclaimer: Whilst reasonable care has been taken in preparing the brochure and constructing the model and sales gallery show flat (the materials), the developer and its agents shall not be held responsible for any inaccuracies in their contents or between the materials and the actual unit. All statements, literature and depictions in the materials are not to be regarded as a statement or representations of the fact. Visual representations such as layout plans, finishes, illustrations, pictures, photographs and drawings contained in the materials are artists' impressions only and not representations of fact. Such materials are for general guidance only and should not be relied upon as accurately describing any specific matter. All information, specifications, plans and visual representations contained in the materials are subject to changes from time to time by the developer and/or the competent authorities and shall not form part of the offer or contract. The sales and purchase agreement shall form the entire agreement between the developer and the purchaser and shall in no way be modified by any statement, representations or promises (whether or not contained in the materials and/or made by the developer or the agent) made. No part of the materials shall constitute a representation or warranty. Measurements given for the kitchen includes the utility area also. All measurements for all rooms are in feet, inches and meters. Payment patterns are subjected to change based on the construction process